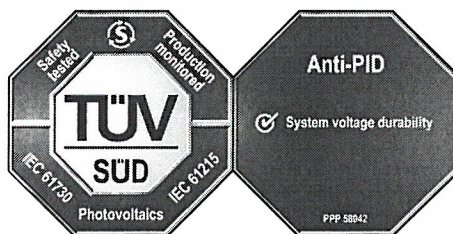




Product Service

CERTIFICATE

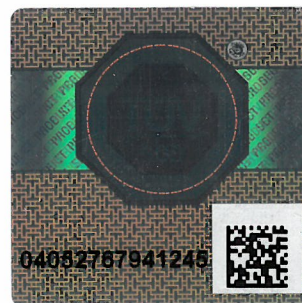
No. Z2 18 03 02936 002

Holder of Certificate: Sharp Electronics GmbHNagelweg 33-35
20097 Hamburg
GERMANY**Certification Mark:****Product:****Crystalline Silicon Terrestrial Photovoltaic (PV) Modules
(Mono & Poly Crystalline Silicon Photovoltaic (PV) Module)**

The product was tested on a voluntary basis and complies with the essential requirements. The certification mark shown above can be affixed on the product. It is not permitted to alter the certification mark in any way. In addition the certification holder must not transfer the certificate to third parties. See also notes overleaf.

Test report no.: 682901405808A**Valid until:** 2022-11-02**Date,** 2018-03-16

Page 1 of 2

(Harry Shubo Zhang)



Product Service

CERTIFICATE**No. Z2 18 03 02936 002****Model(s):**

NU_SCxxx (xxx=335-375, in steps of 5);
NU_SAxxx (xxx=270-315, in steps of 5);
ND_RExxx (xxx=295-345, in steps of 5);
ND_RBxxx (xxx=245-290, in steps of 5)
xxx: in steps of 5

Parameters:

Construction: Framed, with Junction box,
Cable and Connectors
Application class: Class A
Max. system voltage: 1000 V d.c.
Fire safety class: Class C
PID test condition: ± 1000 V d.c., 192 h,
85% RH, 85 °C

Rated output power at STC:

NU_SCxxx:
335 W, 340 W, 345 W, 350 W, 355 W, 360 W, 365 W,
370 W, 375 W;
NU_SAxxx:
270 W, 275 W, 280 W, 285 W, 290 W, 295 W, 300 W,
305 W, 310 W, 315 W;
ND_RExxx:
295 W, 300 W, 305 W, 310 W, 315 W, 320 W, 325 W,
330 W, 335 W, 340 W, 345 W;
ND_RBxxx:
245 W, 250 W, 255 W, 260 W, 265 W, 270 W, 275 W,
280 W, 285 W, 290 W

**Tested
according to:**

IEC 61215(ed.2)
IEC 61730-1(ed.1);am1;am2
IEC 61730-2(ed.1);am1
PPP 58042B:2015

**Production
Facility(ies):**

70321, 96705, 96698, 78439, 81766, 75179, 96822, 90968,
96701, 96716, 96699, 99531, 97323, 01453, 01783, 92177,
76976, 02225